

An Evaluation of RICO Prosecutions against Gangs

Robert E. Worden Ph.D. Moon Sun Kim, Ph.D.

Sarah J. McLean, Ph.D. Heidi S. Bonner

The John F. Finn Institute for Public Safety, Inc.

Prepared for the American Society of Criminology November, 2007

Introduction

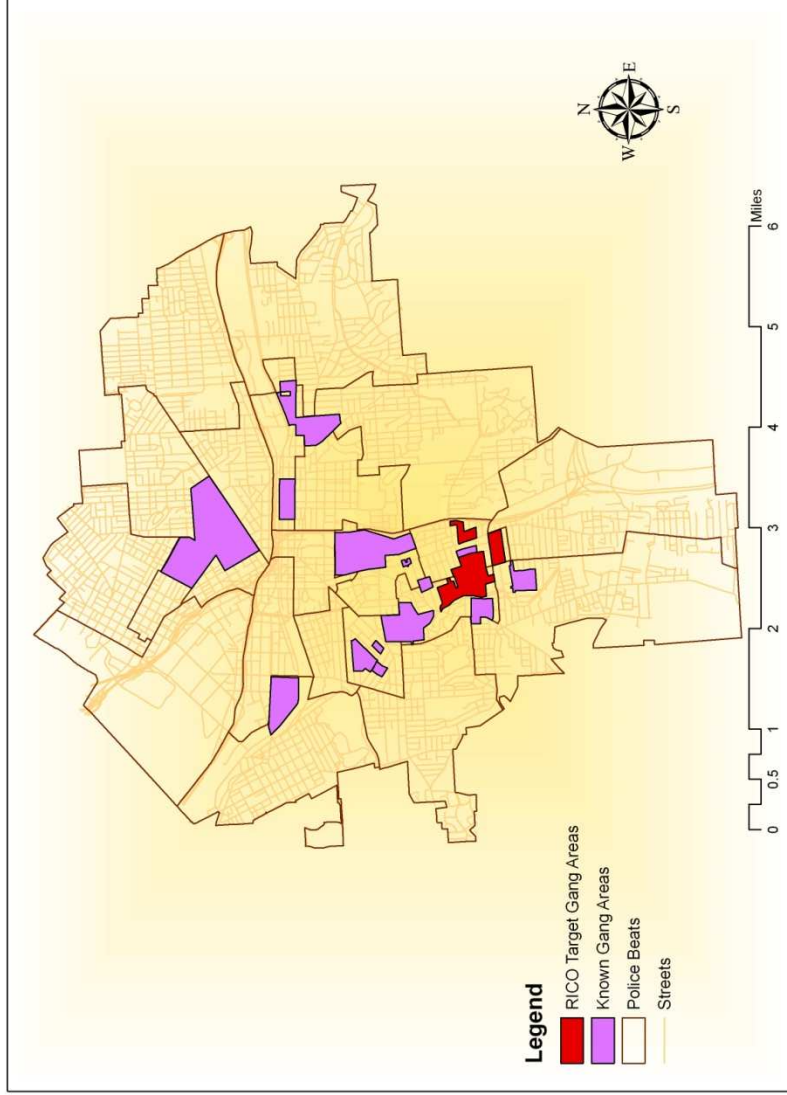
- In 2003, a large Northeastern city began a series of RICO prosecutions against criminal street gangs. Over the course of three years, three gangs were targeted: Gang One on June 25, 2003 (26 members indicted and convicted), Gang Two on August 2, 2005 (16 members indicted and convicted), and Gang Three on August 22, 2006 (14 members indicted and convicted). All but one of the offenders pled guilty and those who pled received an average sentence of 15 years federal time with no parole. We undertook an evaluation of the effect on criminal activity as a result of these prosecution and subsequent incarcerations.

Methods

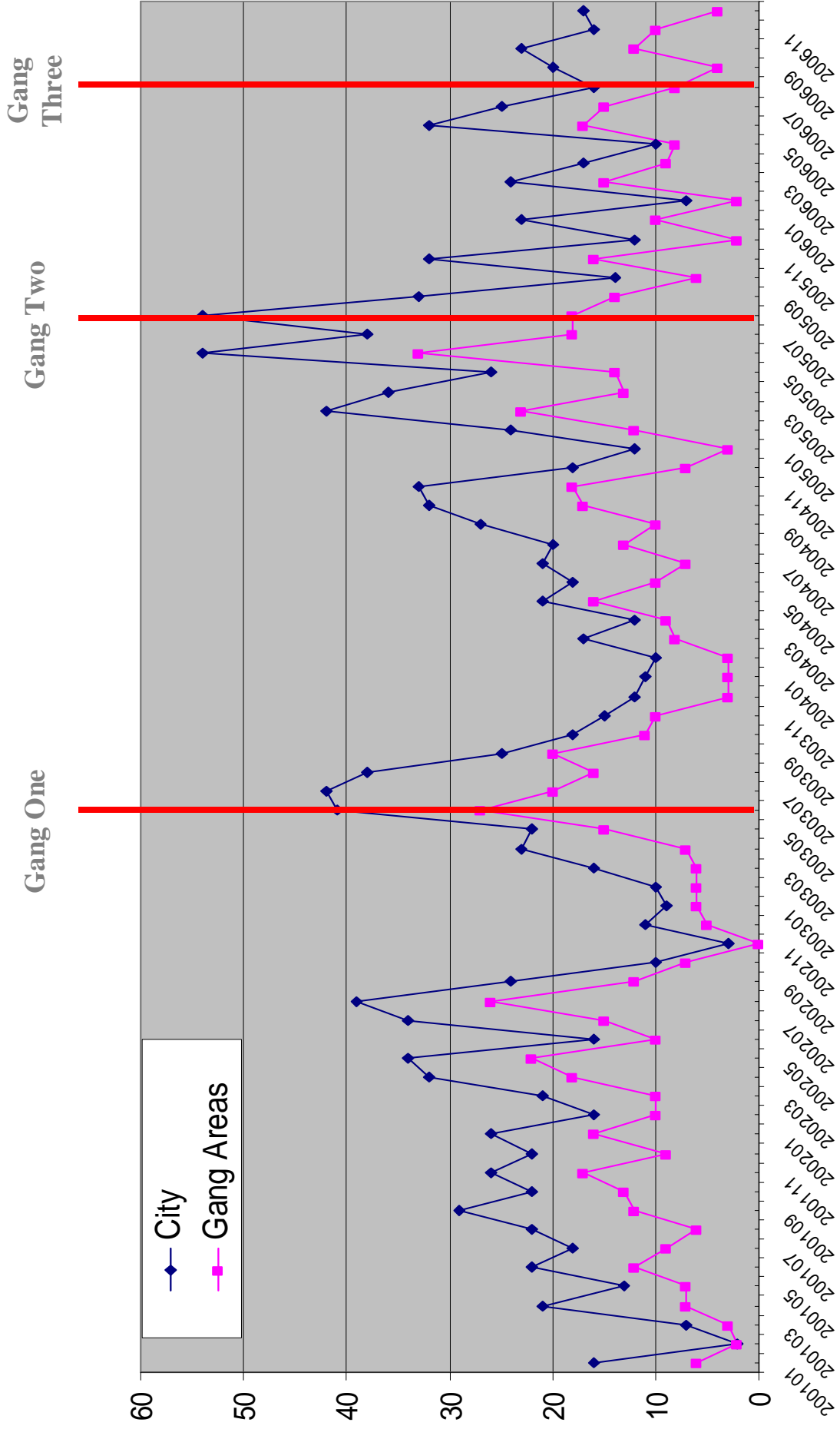
- The current analysis depicts the effect on the number of confirmed shots fired over time in both the targeted areas and citywide, represented in line charts and spatial density maps.
- Planned analyses are described in the final slide.

Criminal Street Gang Territories

Criminal Street Gang Areas

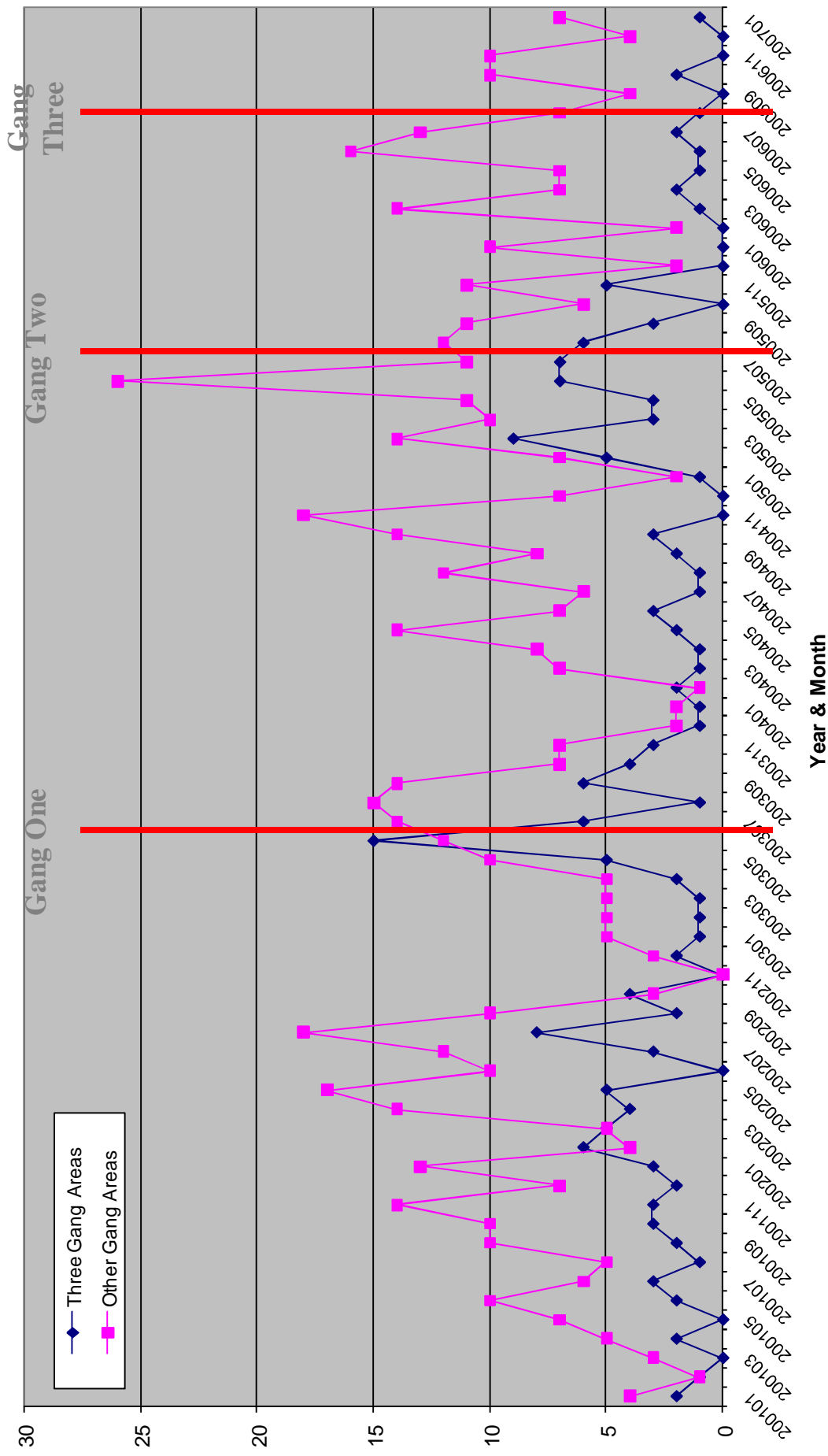


Number of Shots

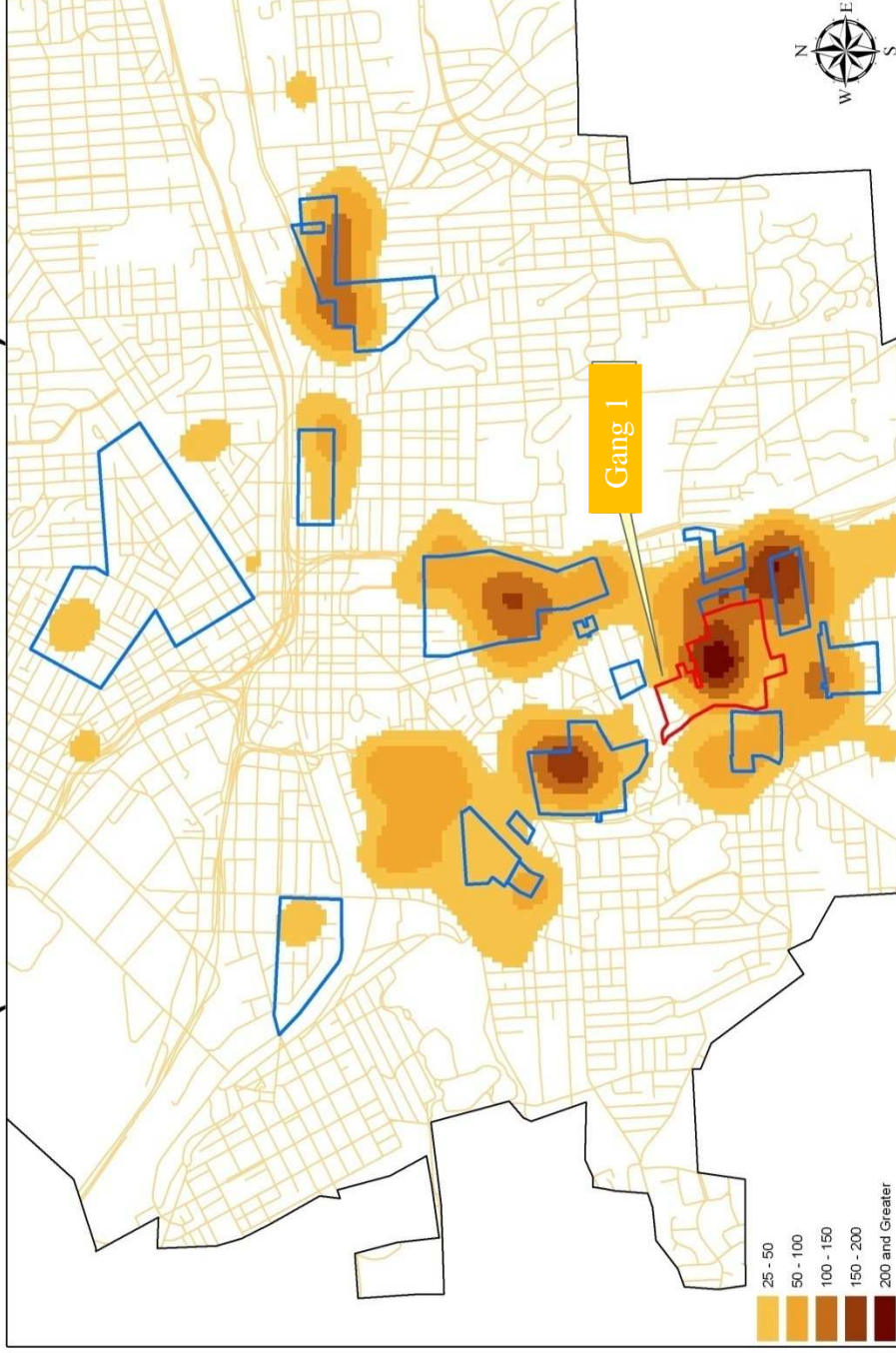


Year & Month

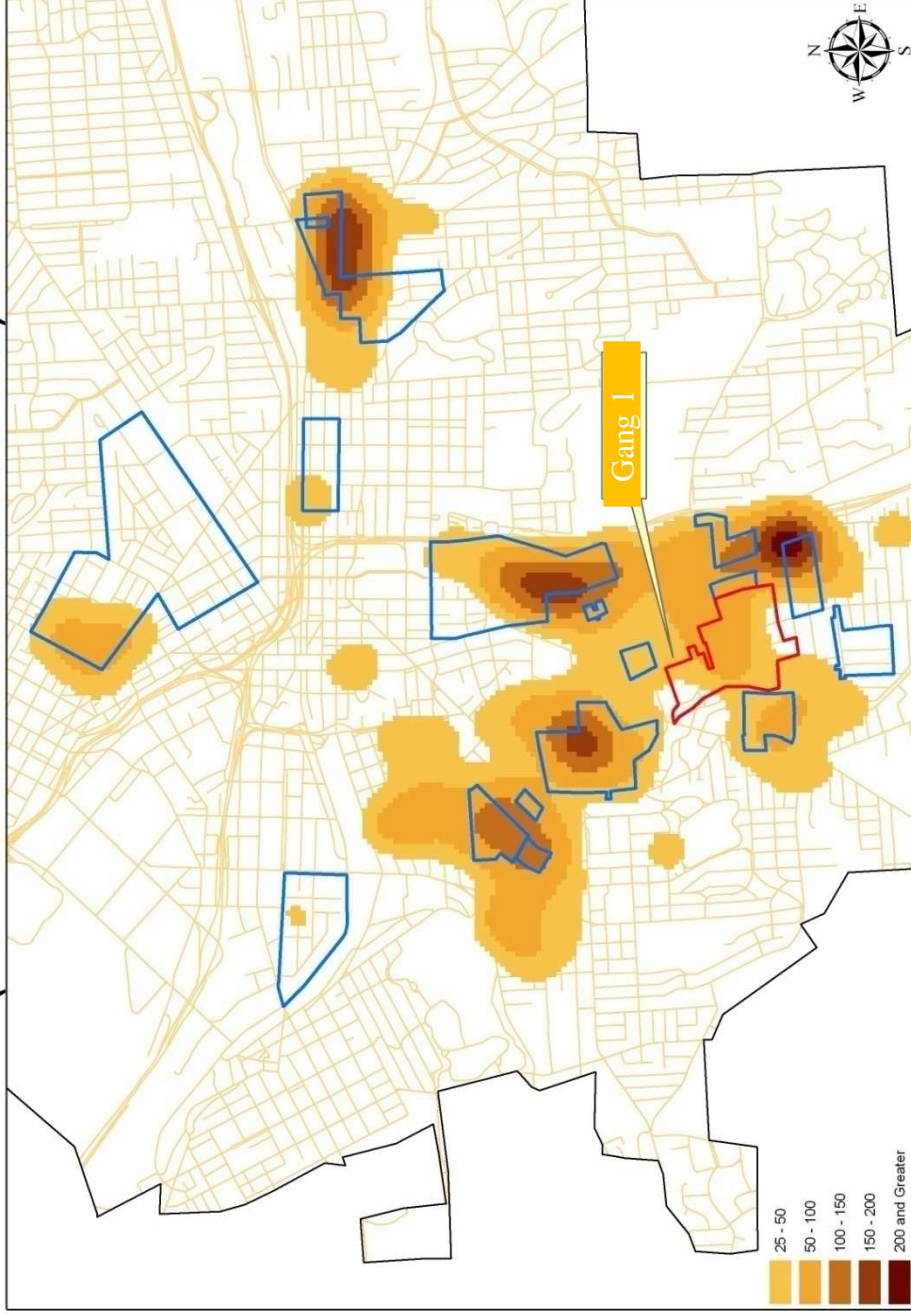
Number of Shots



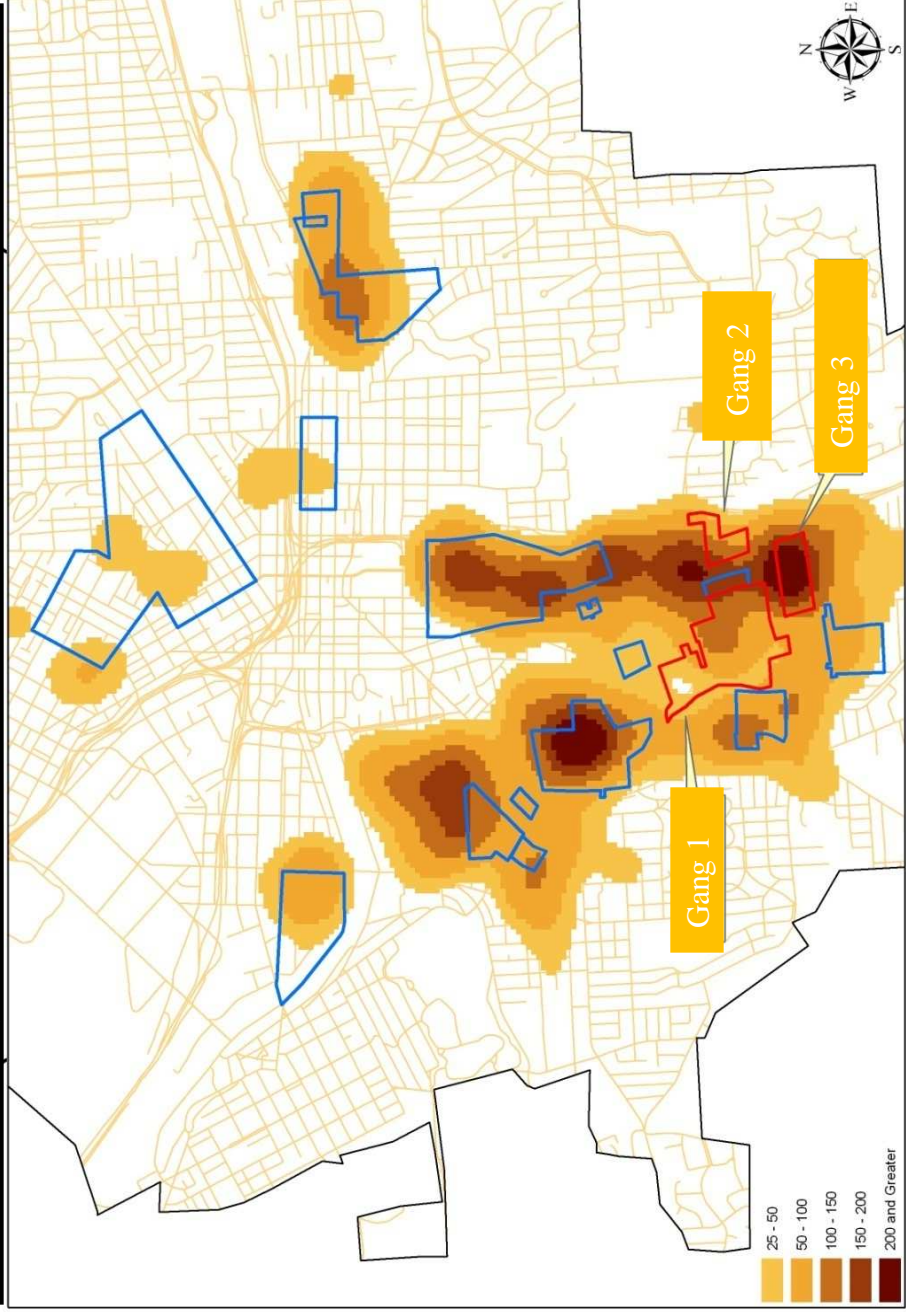
Density of Shots & Known Gang Territories (Pre- RICO Prosecution: Period 1)



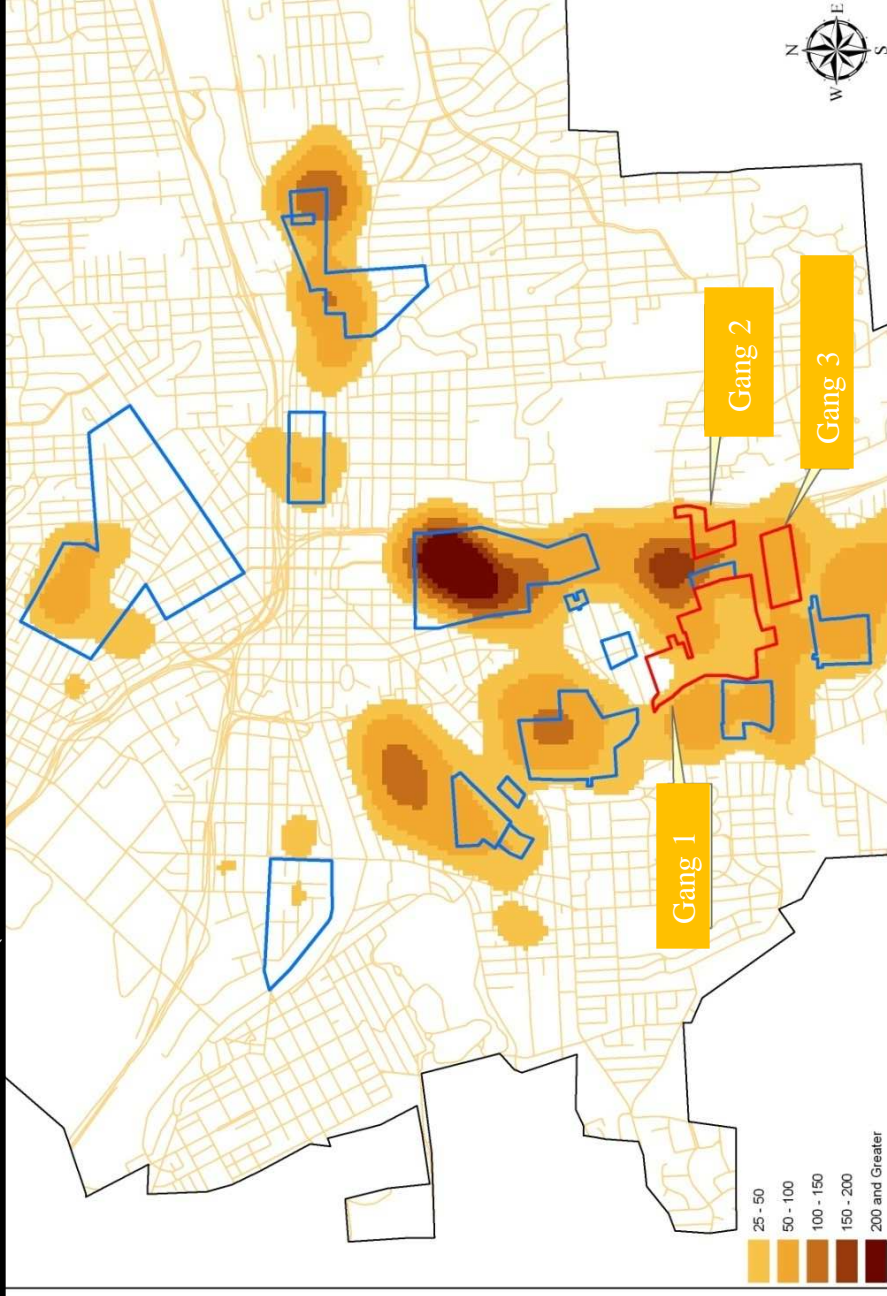
Density of Shots & Known Gang Territories (Post- RICO Prosecution: Period 2)



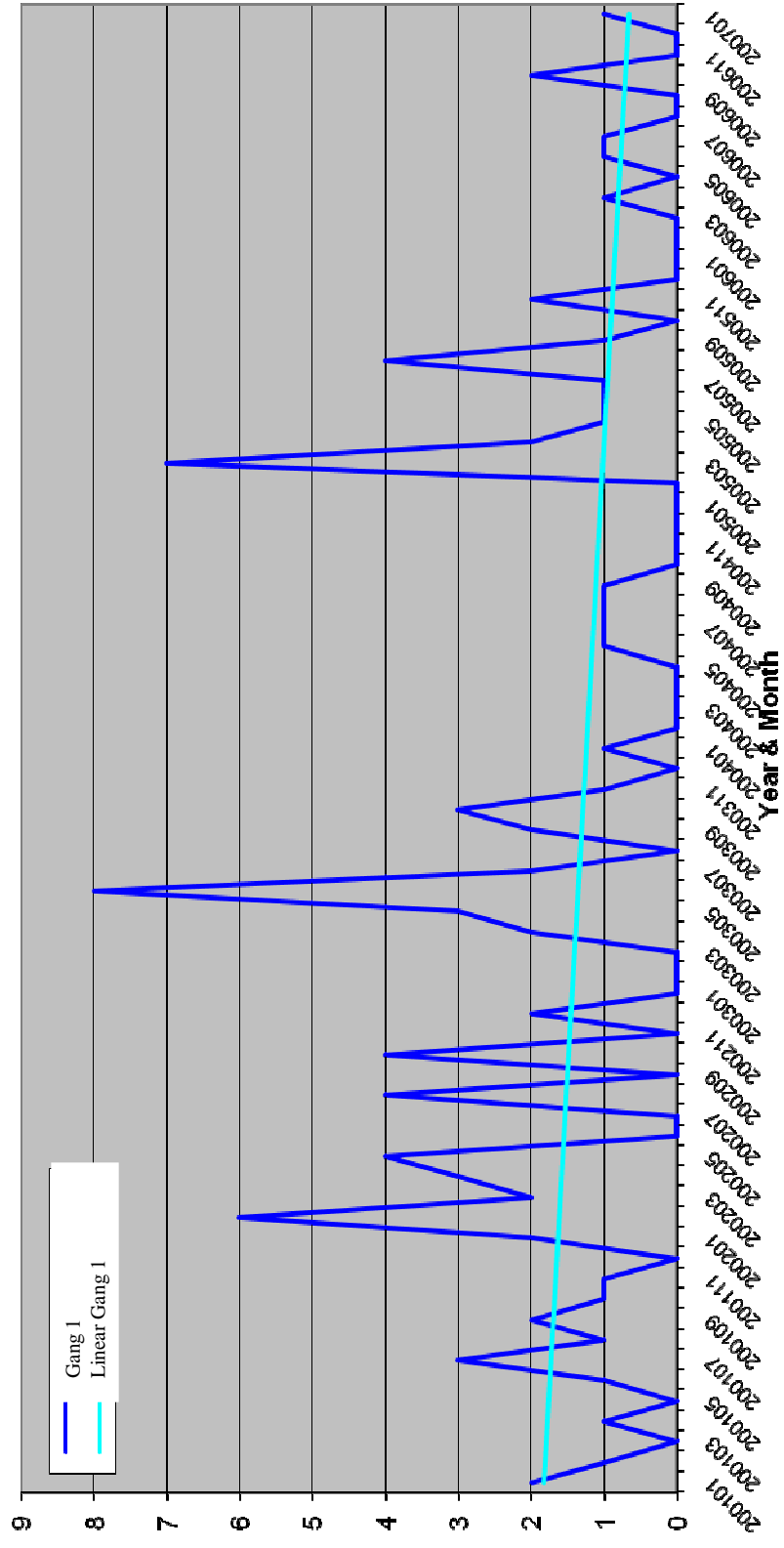
Density of Shots & Known Gang Territories (Post G1/Pre G2 Prosecutions: Period 3)



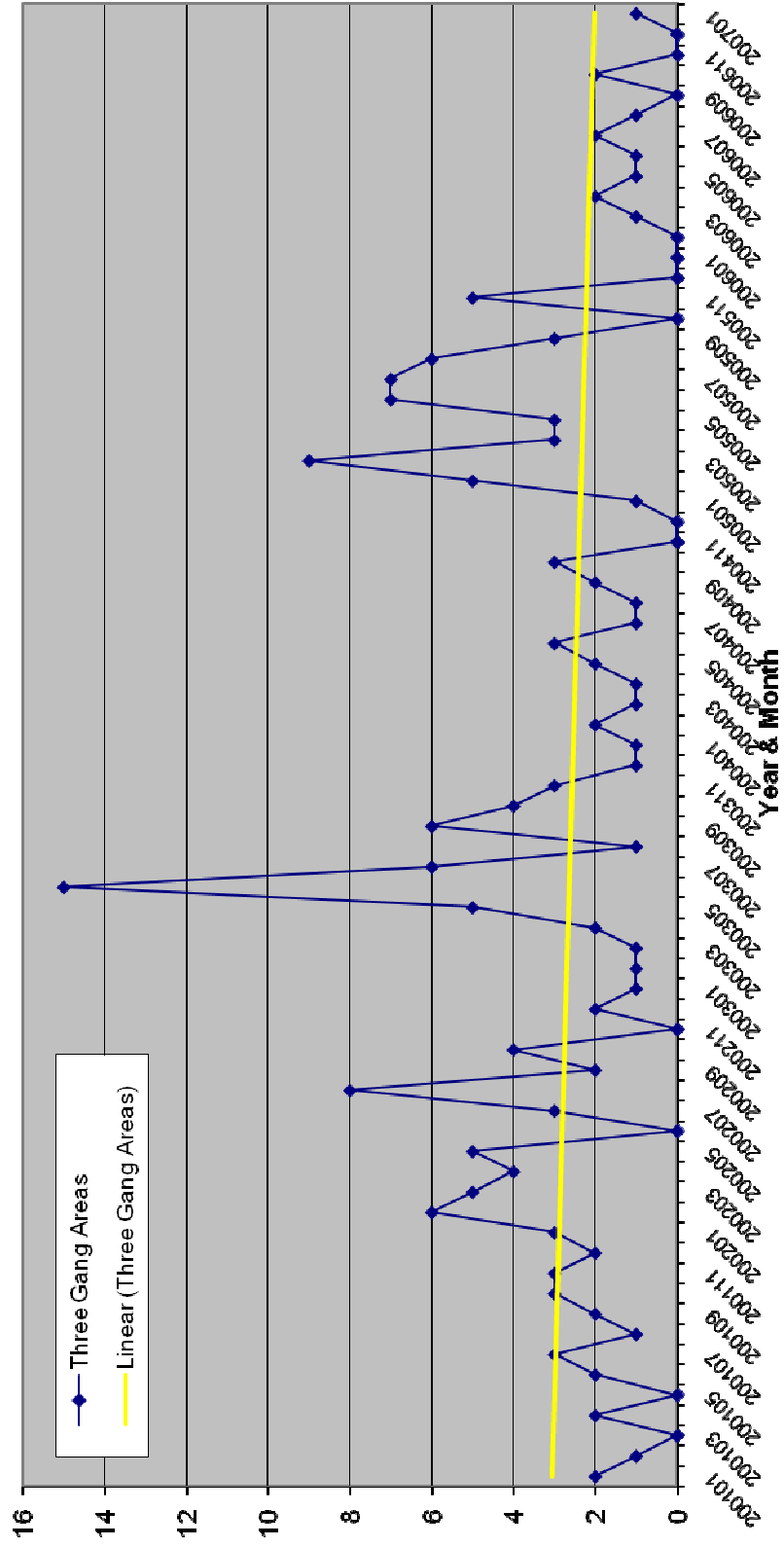
Density of Shots & Known Gang Territories
(Post G2 Prosecution: Period 4)



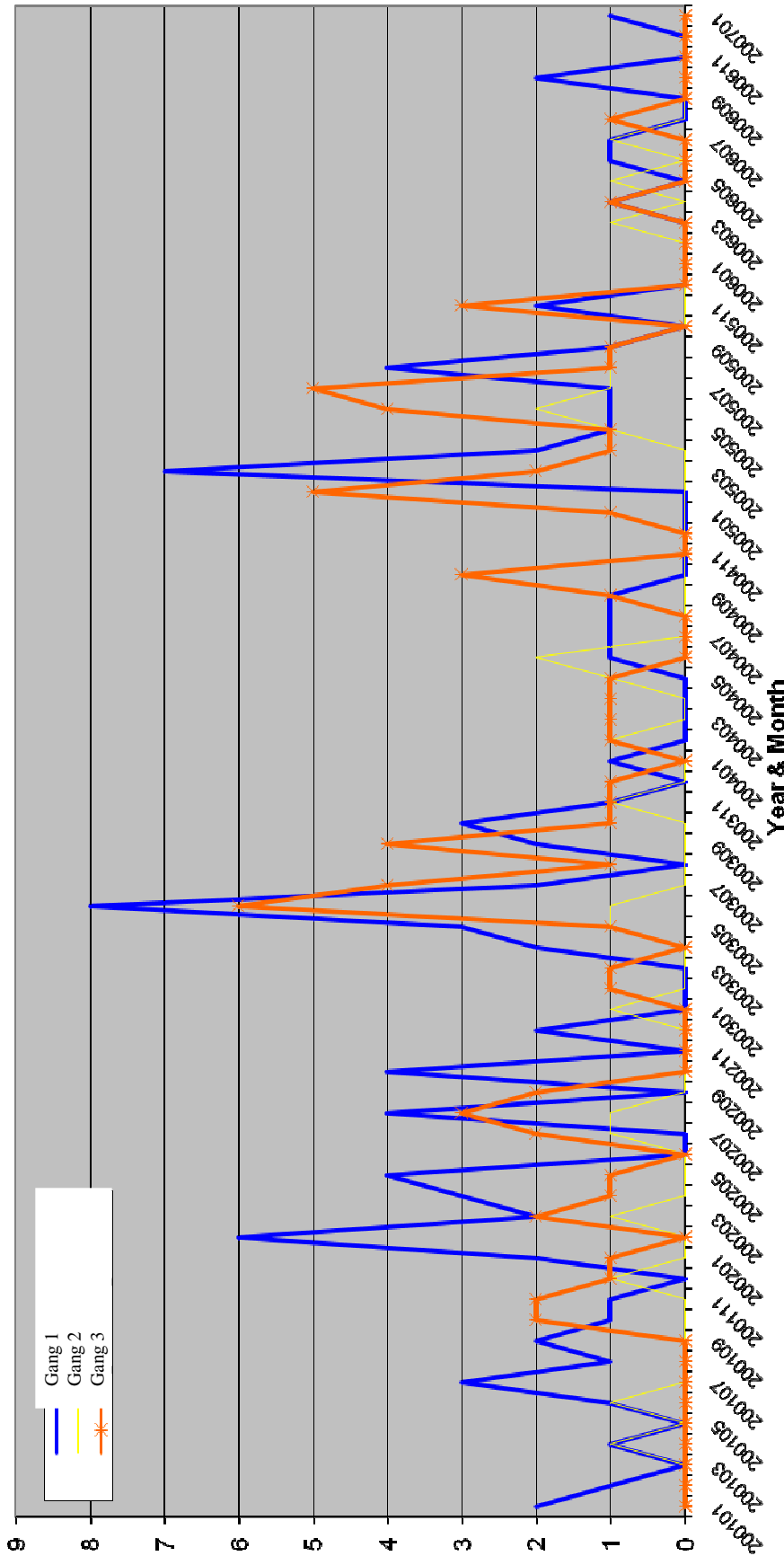
Number of Shots



Number of Shots



Number of Shots



Findings

- Preliminary descriptive analysis indicates that the RICO prosecutions had an effect on shots fired in the targeted gang territories. The spatial density maps in particular indicate a marked reduction in shooting activity following each prosecution.

Next Steps

- Incorporate additional dependent variables
 - Part I, firearm-related violent crime, overall and by offense category,
 - Other Part I violent crime,
 - Shots fired overall and with injury and death,
 - Simple assault,
 - Part I property crime, overall and by offense category,
 - Drug offenses,
 - Weapons offenses (especially criminal possession of a firearm),
 - Total citizen-initiated calls for service,
 - Quality of life calls for service , and
 - Drug-related calls for service

Next Steps

- Estimate the direction and magnitude of effects in two different ways:
 - an ARIMA model of the interrupted time series, with the date of each set of RICO indictments as the intervention, and a panel model of crime and disorder in each gang area. ARIMA models will be estimated city-wide, and within each (targeted and other) gang area, treating each prosecution as a distinct intervention.
 - a panel model, treating each gang area as a unit of analysis for which we have monthly indicators of crime and of pre- and post-intervention status. Thus we will have, for example, dummy-coded variables for each RICO case for each month for each gang area, forming the basis for estimates of the effects of each case across all 19 gang areas.